

Blackmagic Videohub 120x120 12G



\$12,995

Blackmagic Videohub 120x120 12G is an advanced zero latency video router that supports any combination of SD, HD and Ultra HD on the router at the same time. The 12G-SDI inputs feature LEDs on each BNC that indicate an SDI signal, plus there are 12G-SDI outputs, redundant power and reference connections in a four rack unit design. The large HD LCD lets you see video before routing and clearly displays routing labels and video standards. Routing can be performed by direct button selection and using the large spin knob control that has an electronic clutch. It also features SDI re-clocking, external Ethernet control and supports all SDI video standards up to 2160p60.

Connections

SDI Video Inputs

120

Video Input Re-Sync

None

Reference Outputs

Reference terminating loop output.

SDI Video Outputs

120

SDI Reclocking

On all SDI outputs.

Ethernet

Supports 10/100/1000 BASE-T.

SDI Rates

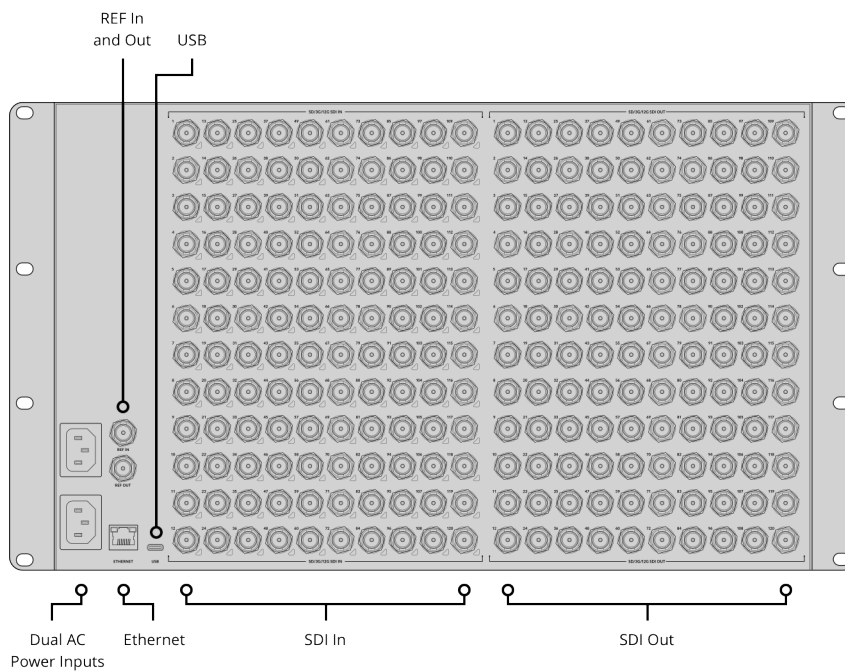
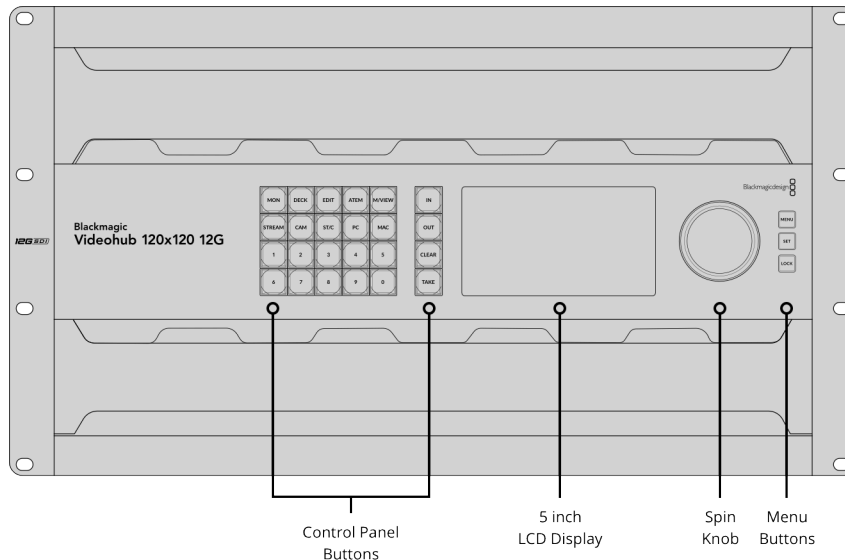
DVB-ASI, 270Mb, 1.5G, 3G, 6G, 12G.

Reference Inputs

Tri-Sync or Black Burst.

Computer Interface

USB-C



Standards

SD Video Standards

525i59.94 NTSC, 625i50 PAL

HD Video Standards

720p50, 720p59.94, 720p60
 1080i50, 1080i59.94, 1080i60
 1080p23.98, 1080p24, 1080p25,
 1080p29.97, 1080p30, 1080p47.95,
 1080p48, 1080p50, 1080p59.94,
 1080p60
 1080PsF23,98, 1080PsF24,
 1080PsF25, 1080PsF29.97, 1080PsF30

2K Video Standards

2Kp23.98 DCI, 2Kp24 DCI, 2Kp25 DCI,
 2Kp29.97 DCI, 2Kp30 DCI, 2Kp47.95
 DCI, 2Kp48 DCI, 2Kp50 DCI, 2Kp59.94
 DCI, 2Kp60 DCI
 2KPsF23.98 DCI, 2KPsF24 DCI,
 2KPsF25 DCI, 2KPsF29.97 DCI,
 2KPsF30 DCI

Ultra HD Video Standards

2160p23.98, 2160p24, 2160p25,
 2160p29.97, 2160p30, 2160p47.95,
 2160p48, 2160p50, 2160p59.94,
 2160p60

4K Video Standards

4Kp23.98 DCI, 4Kp24 DCI, 4Kp25 DCI,
 4Kp29.97 DCI, 4Kp30 DCI, 4Kp47.95
 DCI, 4Kp48 DCI, 4Kp50 DCI, 4Kp59.94
 DCI, 4Kp60 DCI

SDI Compliance

SMPTE 259M, SMPTE 292M, SMPTE 296M, SMPTE 372M, SMPTE 424M, SMPTE 425M level A and B
SMPTE 2081-1, SMPTE 2081-10, SMPTE 2082-10, ITU-R BT.656 and ITU-R BT.601

SDI Audio Sampling

Television standard sample rate of 48kHz and 24-bit.

SDI Video Sampling

YUV 4:2:2 and RGB 4:4:4

SDI Color Precision

10, 12-bit RGB 4:4:4 in all HD and 2K modes, Ultra HD modes up to 2160p30 and 4K modes up to 4Kp30 DCI. 10-bit YUV 4:2:2 in all modes.

SDI Color Space

REC 601, REC 709, REC 2020

SDI Auto Switching

Automatically selects between 270Mb SD-SDI, 1.5G HD-SDI, 3G level A and level B HD-SDI, 6G HD-SDI, 12G-SDI and DVB-ASI on each input so that each input can be running a different television standard.

SDI Metadata Support

Video payload identification ancillary data as per SMPTE 352M.

Control

Built in Control Panel

24 buttons for local control of Videohub with 3 buttons and search dial for menu control. 5 inch color display.

External Control Panel

Includes Blackmagic Videohub software control panel for Mac and Windows. Supports Videohub Smart Control Pro and Videohub Master Control Pro hardware panels. Includes Blackmagic Videohub SDK and Ethernet Videohub Control Protocol.

Control Panel Connection

Ethernet

Software

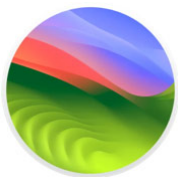
Software Control

Router control included free for Windows™ and Mac™.

Internal Software Upgrade

Via included updater application.

Operating Systems



Mac 13.0 Ventura,
Mac 14.0 Sonoma or later.



Windows 10, 64-bit.
Windows 11.

Display

Displays

Built in 5 inch LCD for video and menu settings.

Power Requirements

Power Supply

2 x Internal 100 - 240V AC 50/60Hz.
IEC power cables required.

Power Fail Protection

Crosspoint connections preserved
and restored instantly at power on.

Power Usage

140 W max.

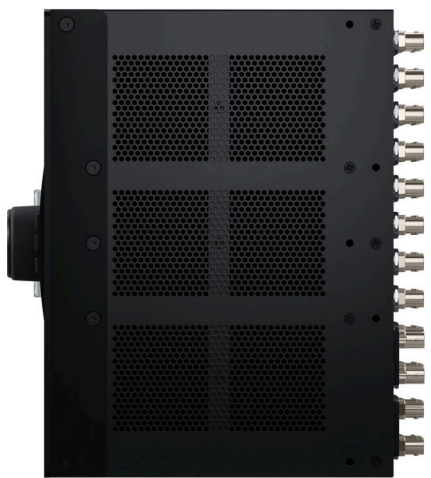
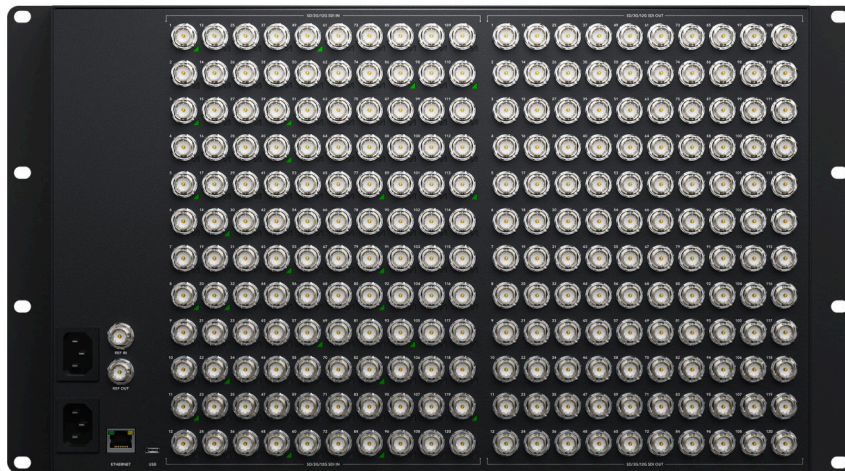
Physical Installation

6 rack units height.

Physical Specifications



19 in



10.47 in

9.52 in



33 lb

Environmental Specifications

Operating Temperature

0° to 40° C (32° to 104° F)

Storage Temperature

-20° to 60° C (-4° to 140° F)

Relative Humidity

0% to 90% non-condensing

What's Included

Blackmagic Videohub 120x120 12G

Welcome wallet with QR code for software download

Warranty

3 Year Limited Manufacturer's Warranty, and 12 Month Warranty on the front panel.

All items on this website are copyright Blackmagic Design Pty. Ltd. 2024, all rights reserved. All trademarks are property of their respective owners. MSRP includes duties, but excludes sales tax and shipping costs. This website uses remarketing services to advertise on third party websites to previous visitors to our site. You can opt out at any time by changing cookie settings. [Privacy Policy](#)

Blackmagic Design Authorized Reseller